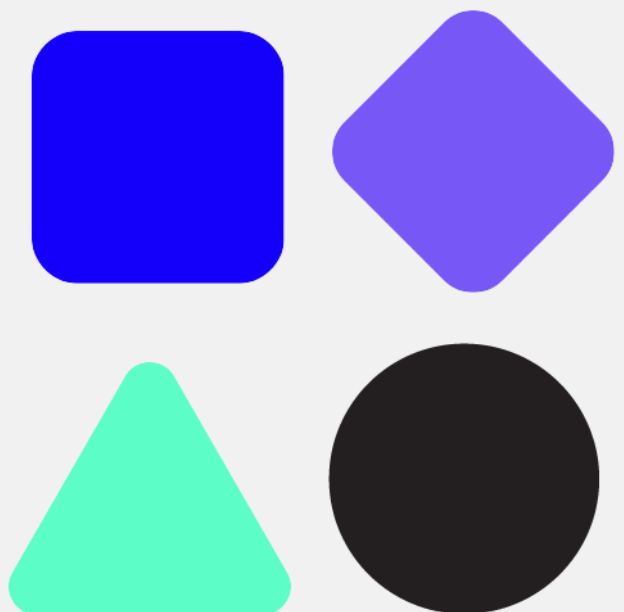


mistywest

MistySOM-G2L Product Brief

MW-G2L-E32G-D2G-I-WX-V0

Last Updated: Oct 27, 2023



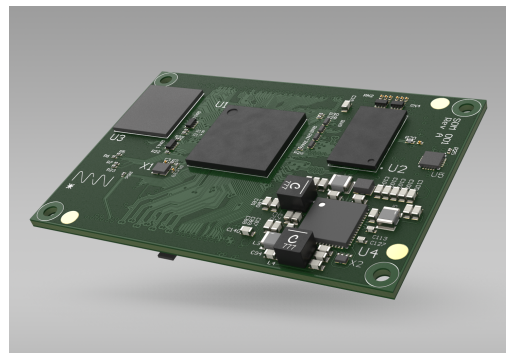
Overview

MistySOM-G2L (MW-G2L-E32G-D2G-I-WX-V0) is the version of the *MistySOM* built around the **Renesas RZ/G2L**.

The MistySOM-G2L is built from the ground up to enable battery powered applications ranging from human machine interface (HMI) solutions to embedded devices for computer vision applications.

The SOM is ruggedized for industrial temperatures and offers long term (10 year) firmware support via a CIP kernel based Linux BSP. It includes a dual core Cortex-A55 and single core Cortex-M33 CPU.

Available separately is the MistyCarrier (MW-V2L-G2L-I-WWB-V0) board allowing easy accessibility to a variety of interfaces.



Get started with [the MistySOM Wiki](#).

About MistySOM-G2L

MistySOM-G2L is ideal for use in industrial and commercial computing applications where low power, reliability, and costs are critical.

Target Applications

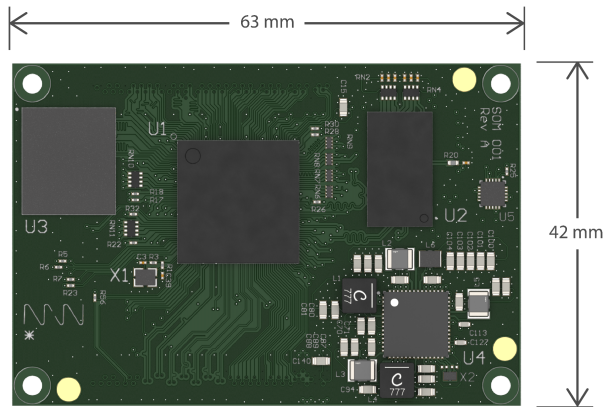
- Barcode Scanner System / Self-Checkout
- Industrial Human-Machine-Interface (HMI)
- Portable Equipment
- Network Gateway or Hub
- Precision Time Synchronization
- General Single Board Computer
- Wearable Camera

MW-G2L-E32G-D2G-I-WX-V0 Specifications

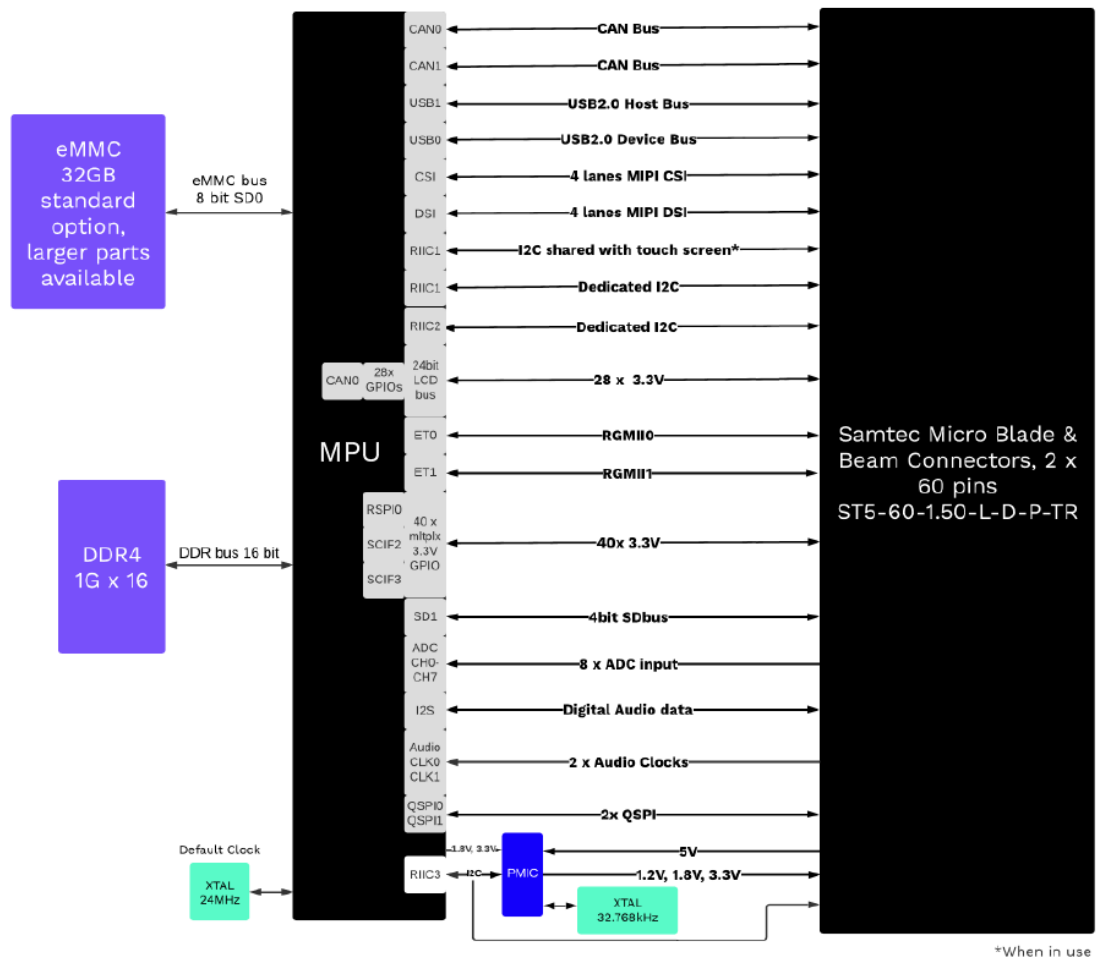
Type	Specification
MPU	Renesas RZ/G2L
CPU	Cortex-A55 (1.2GHz) x 2, Cortex-M33 x 1
GPU	3D graphics engine Mali-G31
NPU	None
Storage	32 GB eMMC (16-128 GB available)
Memory	2 GB DDR4 (1-2 GB available)
Temp. Range	-40 to 85°C
RTC	Yes
Dimensions	63 x 42 x 7.05 mm
Carrier Board Connections	2 x 120 pin high-speed mezzanine connectors (ST5-60-1.50-L-D-P-TR)
Data Lanes Available	MIPI CSI (4-lanes) MIPI DSI (4-lanes) 2x USB 2.0 2x QSPI, OctaFlash or Hyperflash Interface 2x dedicated I2C 2x GB ethernet (RGMII) 2x CANBus Parallel 24-bit LCD bus GPIO - GPIO, SSI, SPI, UART, CANBus, I2C, Timer, IRQ
Inputs	8x 12 bit ADC 2x Audio Clock
Supported Cameras	Google Coral Cam E-con Systems - e-CAM20_CRUZ_1H01R2 E-con Systems - e-CAM21_CURZ_1H01R2 (link not available)

Dimensions

4x M2 mounting holes
42x63mm Outside dimensions



MW-G2L / MW-V2L BLOCK DIAGRAM



Learn More

Distribution

More information about ordering MistySOM can be found [on GroupGets](#).



Media

- [Surviving the Semiconductor Shortage on SoMs](#) - Embedded Computing Design
- [MistySOM Renesas RZ/G2L or RZ/V2L SoM and devkit goes for \\$112 and up](#) - CNX Software
- [MistySOM: The Ultimate Low Power Computer Vision SOM by MistyWest](#) - GroupGets (YouTube)
- [How to Cross The Embedded Computing Valley of Death](#) - IoT One / Industrial IoT Spotlight
- [Embedded Vision and Connected Intelligence for IoT](#) - Industry40TV (YouTube)

Get In Touch

[**mistysom.com**](http://mistysom.com)

mistysom@mistywest.com

[LinkedIn](#)
[Twitter](#)

